



Buckinghamshire Council

Amersham Community Board

Minutes

Minutes of the meeting of the Amersham Community Board held on Wednesday 4 November 2020 in MS Teams Virtual Meeting, commencing at 7.00 pm and concluding at 8.55 pm

In Attendance

D Bray, F Copp, I Darby, M Flys, M Harker OBE, G Harris, C Jones, D King, N Shepherd, M Tett, L Walsh, J Waters, G Williams, D Alder, G Allison, P Batting, C Beevers, A Buckingham, E Burgham, S Catanach, P Clarke, M Crowe, R Funk, A Garnett, J Gocher, A Greenhalgh, H James, I Lamb, N Magrath, H Mee, M Pegg, B Poole, D Rees, K Ridout, J Roads, E Toettcher, M Turner, R Vine and L Wright.

Agenda Item

1 Chairman's Welcome & Introductions

The Chairman welcomed all to the meeting and asked speakers to introduce themselves and their organisation prior to speaking.

2 Apologies for Absence

Mr C Jackson- Buckinghamshire Council; Ms J Burton- Buckinghamshire Council; Mr D Phillips- Buckinghamshire Council;
Mr B Drew- Little Chalfont Parish Council: Mr M Crowe in substitution.

3 Declarations of Interest

Ms M Harker OBE declared an interest as the Chairman of Community Impact Bucks.

4 Minutes of the last meeting

The minutes of the meeting held on 10 September were **AGREED** as an accurate record.

Mr G Williams gave an overview of an additional report provided due to an update of Covid-19 due to start on Wednesday 05 November. The report was appended to the minutes.

5 Neighbourhood Matters

Pre submitted questions were reviewed.

6 Chiltern Voice Presentation

Mr D Rees from Chiltern Voice gave an update, slides appended to the minutes.

7 Updates from Sub-Groups

The Chairman gave an overview of the presentation appended to the minutes.

It was confirmed there was a Facebook page and a direct email address for the Community Board- Amersham@Buckinghamshire.gov.uk

Ms M Turner gave a brief update on the Amersham Coronavirus Help Group.

Mr R Funk gave a brief update on the Little Chalfont Good Neighbours Group and the Coronavirus Facebook help group.

8 Community Board Funding Applications for Approval

The Chairman gave an overview of the funding applications received.

There was an in-depth discussion on the funding applications, they were resolved as follows.

Resolved:

Voices and Choices- **AGREED**

Citizens Advice Bureau- **AGREED**

Little Chiltern Community Association- **AGREED**

Chiltern Voice- **AGREED**

The Chairman advised of projects in the pipeline that would be looking at submitting funding applications:

- Restore Hope Christmas Family Food and Activities
- Chiltern Rangers working with local schools such as Stony Dean and St Mary's
- Chiltern Arts March 2021 concert in the local Church
- Amersham Scout Hut development
- The Fitness Garden activities support to older people
- Amersham Oakfield Corner display
- Little Chalfont Nature Park CCTV
- Amersham Museum Shopping Before Plastic Project

9 Date of Next Meeting

It was confirmed that Remembrance Day ceremonies were still happening across the board area, but these would be private rather than public and would follow government guidelines.

MS M Harker asked the board if they would be willing to accept a last-minute application for funding to support radio Christmas in the area. The Chairman confirmed the Board would be happy to accept this and deal with it virtually.

Thursday 18 February 2021 7-8.30pm.

MS Teams Virtual Meeting.



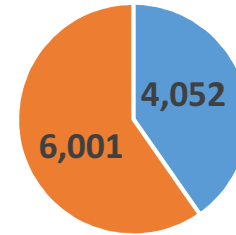
Community Support Hub Model

Stepping up support hubs for vulnerable people in a future
Covid-19 lockdown

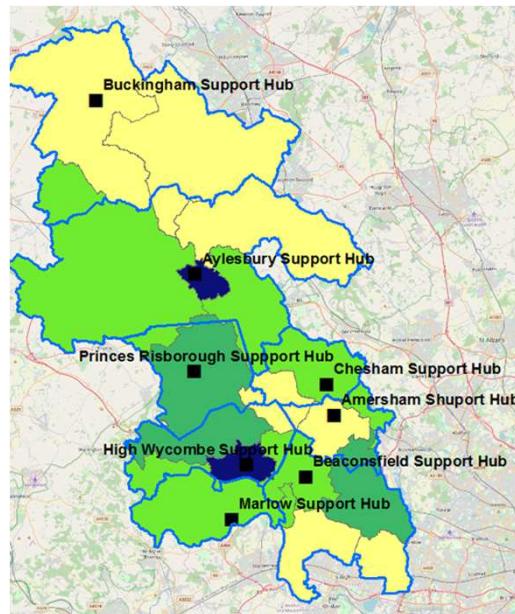
Shielding cohort

- Bucks population (2019 estimate) 546,033
- Total identified as Clinically Extremely Vulnerable (asked to shield) **19,416**
- 31.5 shielding residents per 1000 population
- Updated Shielding Patient Lists provided daily by Government (MHCLG), now weekly

Number of shielding residents completing a Gov.uk registration form



■ Required assistance
■ No help needed



	Total number assisted (inc. non-shielded)	Emergency food deliveries made	Residents registered for assistance
Amersham	409	20	246
Aylesbury	1597	175	1009
Beaconsfield	1370	93	839
Buckingham	557	47	357
Chesham	489	13	294
Marlow	344	12	231
Risborough	346	8	209
Wycombe	1100	120	867
Total	6215	485	4052

CEV breakdown by board

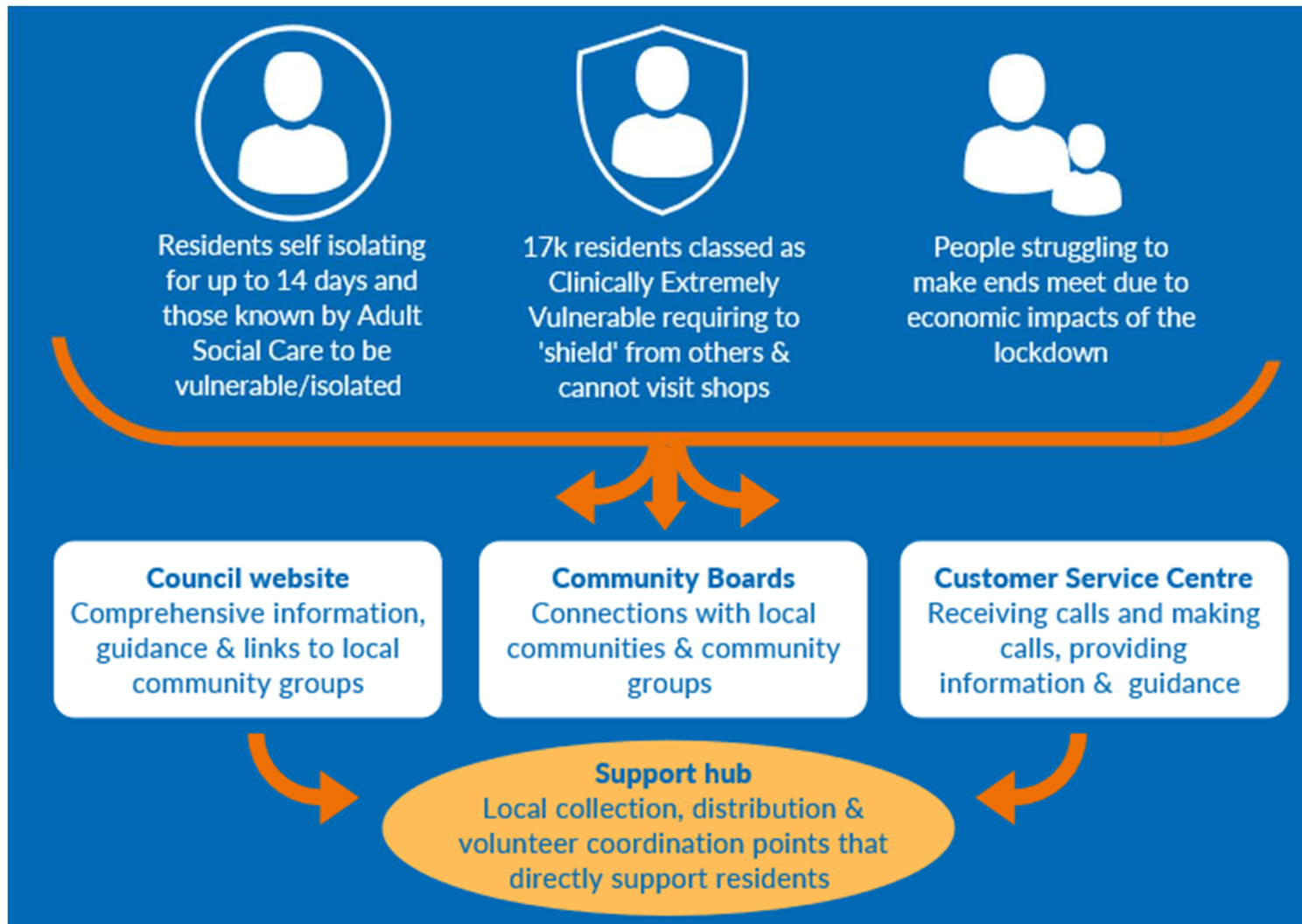
Community Board	31/07/2020	29/10/2020	Net Diff	% Diff
Amersham	728	868	140	19%
Aylesbury	2129	2558	429	20%
Beaconsfield and Chepping Wye	1212	1362	150	12%
Beeches	919	980	61	7%
Buckingham and Villages	688	765	77	11%
Chesham and Villages	1078	1202	124	12%
Denham, Gerrards Cross and Chalfonts	1378	1519	141	10%
Haddenham and Waddesdon	952	1108	156	16%
High Wycombe	2343	2646	303	13%
Missendens	535	618	83	16%
North West Chilterns	1802	1945	143	8%
South West Chilterns	1109	1316	207	19%
Wendover	930	1073	143	15%
Wexham and Ivers	614	663	49	8%
Wing and Ivinghoe	771	887	116	15%
Winslow and Villages	773	849	76	10%
Grand Total	17961	20359	2398	13%

Preparing for tomorrow!

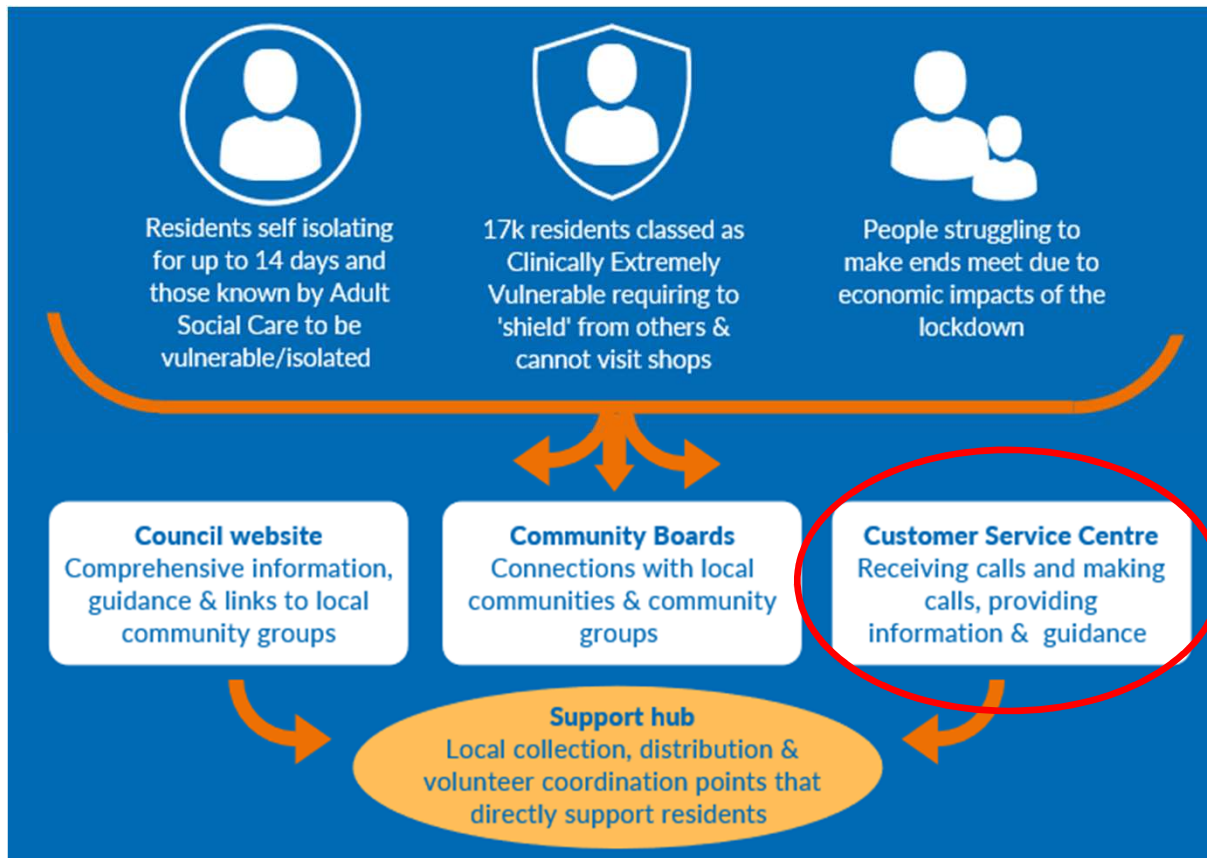
Those who are clinically extremely vulnerable are being advised to:

- Work from home (if this is not possible they may be eligible for Statutory Sick Pay (SSP) or Employment Support Allowance (ESA)).
- Exercise outdoors (whilst maintaining social distancing)
- Stay at home as much as possible, not go to shops or pharmacy
- Meet outside with an individual's support bubble
- Continue to attend medical appointments
- **CEV children should not attend school from tomorrow for 4 weeks**
- Please note, others living in the same household are **not** advised to follow this guidance

Accessing the support hub service



Accessing the support hub service



- Details of **all** Clinically Extremely Vulnerable people updated weekly
- Customer Service Centre/library staff will prioritise making calls to those who required support in the previous lockdown
- Vulnerable ASC clients impacted by lockdown will also be called
- Any residents can call to request support

The support offer



Delivery of urgent food parcels, supporting with access to priority supermarket delivery slots and organising volunteers to carry out shopping or liaising with food banks to provide support



Prescription pick up, delivery and other essential services relating to medical treatment



Keeping in touch calls to ensure they are ok and have essentials they need, and provision of specialist services for those with a particular care need



Financial aid information that gives sources of help and advice and Local Emergency Support that can cover urgent short-term emergencies

- Residents will be encouraged to make use of food delivery services, whether local or via supermarkets
- Support hubs will provide food in exceptional circumstances
- Arrangements in place with existing contracts to support keep in touch calls e.g. Befriending services

Food Support- helping people to help themselves

1. Priority is to help as many people as possible to pay for their food deliveries

- Monitor the availability of priority supermarket delivery slots
- Provide support to those not confident with or able to shop online
- Updated Bucks Online Directory website providing details on community schemes

2. If appropriate, refer people to food banks to access food

- Monitor the levels of support provided to the community and look to provide support if needed
- Work with foodbanks to ensure we have clear referral routes and mechanisms to assist vulnerable residents

3. Support hubs provide emergency food support in exceptional circumstances

- Deal with requests for exceptional food support, e.g. baby products, significant immediate financial issues or very specific dietary requirements

Preparing for tomorrow!

Principles:

- Support hub will focus on **all** vulnerable people in future lockdowns who are unable to rely on friends or family for their food and basic care needs
- Emphasis will be on residents making use of supermarkets with provision of food being a last resort
- Support will be provided in most cost-effective way
- Make use of local voluntary and community groups as much as possible
- **Coordinate with Members and Community Boards to have the most effective connection with local groups and local councils**



[Home](#) / [Directory](#)

Find activities, groups and services near you

Answer a few questions to help with your search.

The activities and services listed on the directory may be affected by [Coronavirus](#).

Before attending, check the activity is running and that the organisers are following government guidance.

What do you need help with?

Choose as many as you like

- | | |
|---|--|
| <input type="checkbox"/> Staying at home due to coronavirus | <input type="checkbox"/> Staying active |
| <input type="checkbox"/> Socialising | <input type="checkbox"/> Learning new things |
| <input type="checkbox"/> Culture and visiting new places | <input type="checkbox"/> Support with health and wellbeing |

Where would you like to search?

Enter a Buckinghamshire town or postcode



Amersham Community Board

4 November 2020 7pm



What is Chiltern Voice?

- We are a fully licensed Online Community Radio Station
- We broadcast 24 hours a day online created by local volunteers, and with local information covering the area including Chesham, Amersham, The Chalfonts and Great Missenden.
- Our programmes are specially designed to appeal to a local audience with a topical mix of speech and music content

Why Advertise on Chiltern Voice?

- We are a not-for-profit Community project, broadcasting online 24/7 and 365 days.
- Our aim is to deliver a local radio service to cover local events & activities taking place within our target broadcast area.
- All staff and radio professionals are unpaid volunteers
- As a community radio station we can acknowledge your support on air in a number of ways, from overall project sponsorship, to sponsorship of individual programmes or just advertising your company or products (subject to UK broadcast legislation)
- You can use this opportunity to boost your local community profile
- We can discuss other press opportunities, such as joint press releases



Online Advertising Rates

(rates change during FM broadcasts)

Although our advertising will help your business, please don't think of this just as advertising. You are also helping the community, and helping fund your local community radio station.

Package 1 (Lite)

- Regular 30 second adverts from under 5p per slot
- 1 x 30 second advert played minimum 50 times per week
- Your advert will play in rotation with others
- Your company will be credited on the Chiltern Voice website supporters page (no logo or link)

£5 per week
(that's £21.66 per month)

Package 2 (Full)

- Regular 30 second adverts from under 5p per slot
- 1 x 30 second advert played minimum 100 times per week
- Your advert will play in rotation with others
- Your logo will appear on the Chiltern Voice website supporters page with weblink

£10 per week
(that's £43.32 per month)

All regular advertising packages are subject to the cost of Commercial Production. Chiltern Voice offers a low-cost single voice production service for just £40.

Programme Sponsorship

- Individual shows can be sponsored by a single company
- Minimum Sponsorship term is 1 year
- 6 x 10 sec credits during the programme
- Further 4 x 10 sec credits on the promotional trail for the programme
- Your logo will appear on the website page promoting the programme

£2.50 per week (that's £130 per year)

Feature Sponsorship

(prices on application)

- Travel & Weather sponsorship are available
- Many other sponsorship opportunities

All sponsorships include free basic 1 voice production sponsor tag by the Chiltern Voice team.

All sponsorships will be created in Chiltern Voice style using our standard station voice-over.

FM Broadcast Range

(only relevant when on FM)

Chiltern Voice FM Coverage



Proposed FM Launch

Any advertisers taking up a package now, will receive loyalty bonus when we go onto FM...

Contact details

Telephone 01494 911922

White Hill Centre, White Hill, Chesham
Buckinghamshire, HP1 5AG

www.chilternvoice.fm

sales@chilternvoice.fm



Low Cost Commercial Production Service

All advert payments include one low-cost production session by the Chiltern Voice team.

What is included in this?

- We will arrange for one of our presenters or professional voice over artists to record a voiceover from a script that you supply. This should be based on a maximum of 28 seconds when read at a sensible pace. You can supply your own voiceover but this must be recorded to a reasonably high standard with minimum background noise and in a good acoustic environment.
- We will edit the voiceover to fit the 30 second slot, and may have to remove certain words if the duration exceeds the length of the commercial.
- We will then add some appropriate music and sound effects to make the commercial more interesting to the listener.
- We will edit and mix the commercial to a suitable standard for broadcast, and place it in the broadcast schedule according to the tariff that you have agreed.

What is not included?

- We are not able to enter into a process of approval by advertising clients which involves changing the voiceover, music or sound effects, or the editing and mixing of the commercial.
- We are not able to allow clients to be involved in the scheduling of commercials in our programming, except where specific sponsorship arrangements have been agreed.

What do I do if I want to produce my own commercial?

- We can use your existing audio package providing it is technically suitable for broadcast.
- You can contact one of the following companies who offer fully professional commercial production facilities:
 - **JMS** – Phone: 01603 811855
Website: www.jms-group.com
 - **Hot Source Audio** – Phone: 01481 726622
Website: www.hotsourceaudio.com
 - **RPC Audio** – Phone: 01502 558581
Website: www.radioproductioncompany.co.uk

Many others are available – just search “radio commercial production” on the internet.

What’s the cost?

It’s just £40 to have your commercial made by our in-house production team. Feel free to enquire with the other production companies, costs start from around £150.

Sponsorship deals & sponsor tags include production, so there are no production costs.



chiltern voice

Advertising

Telephone 01494 911922 www.chilternvoice.fm

Since we last met in September...

Our Facebook Page is LIVE – like, follow and share to keep updated with activities and projects taking place:

<https://www.facebook.com/Amersham-Community-Board-103122731565359>



Amersham Community Board

Community

Members of the board attended Amersham Market on 29th September to speak to local people about Community Boards – we would like to do this regularly to promote activities and answer questions.



Working group updates...

Coronavirus Recovery and Ongoing Support

- Neighbourhood Watch are promoting volunteering and encouraging more local people to setup schemes in their areas.
- Neighbourhood Watch can be about so much more than reducing crime; it can provide an excellent way of helping neighbours support each other during the coronavirus crisis.
- Updates to be provided on local support ahead of second lockdown

STRONGER TOGETHER



**MAKE YOUR VOLUNTEERING
COUNT FOR MORE!**

- ✓ **SUPPORT YOUR
COMMUNITY DURING THE
PANDEMIC - AND BEYOND**
- ✓ **CREATE A LASTING
NETWORK FOR YOUR ROAD**
- ✓ **JOIN THE NATIONAL
MOVEMENT TO IMPROVE
LOCAL WELLBEING AND
FIGHT CRIME**

**THANK YOU FOR YOUR
VOLUNTEERING**

Your volunteering means:

- people in need get vital extra help
 - general well-being in your local area improves
 - you get the satisfaction of helping your community.
- Right now we urgently need more organisers and volunteers** to set up street networks that are essential to get the goods, services & information to where it's needed to fight the pandemic.

One of the best networks to help in this way is
Neighbourhood Watch (NHW)

**IF YOU DON'T HAVE A LOCAL NHW SCHEME, PLEASE
START ONE NOW TO HELP YOUR COMMUNITY AT THIS
CRITICAL TIME.**

Unsure? Enter your postcode at ourwatch.org.uk to see local schemes. It's easy to start a scheme if you don't have one. If you already have a covid-support network, give it a long-lasting legacy by joining it up to NHW right away.

We are stronger together



CONTACT US NOW AT: bucksnhw@gmail.com

WWW.OURWATCH.ORG.UK

Funding applications relevant to the working group

- The following funding reports were circulated in advance:
 - Voices and Choices require funding for their Community Companionship service
 - Chiltern Citizens Advice Bureau are looking to provide a trained debt case worker
 - Little Chalfont Community Association need to promote their local Covid-19 support network (reduced amount)
 - Chiltern Voice are launching on FM and need to finance additional equipment

Supporting the Health & Wellbeing of Young People

- This working group met to discuss the setup of a Youth Council which will be managed by Amersham Town Council. Feedback on the suggested approach was sought in order to provide communication to the local schools and progress with setup.
- An attendee from Community Youth Ventures said the working group meeting was a *breath of fresh air* and *great to have a good balance between the community and councillors looking at things together*.
- Discussions around supporting the Amersham Scout Hut took place.

Funding applications relevant to the working group

- A report was circulated in advance for the Amersham Youth Council

Village/Town Centre Revival

- A small task and finish group have been working with local marketing agency Square1 to deliver a short tactical campaign to support local retailers and businesses in Amersham and Chesham Bois in the lead up to Christmas. You may have seen the public survey which was promoted on Nextdoor, Facebook and Twitter and hopefully had a chance to provide your input.
- The project is moving ahead at full speed to ensure there is enough time to support businesses at this critical time.
- A future strategic plan will be discussed in the New Year.
- Funding for the short tactical element was agreed by the board electronically due to time constraints.





The one thing you need to discover everything Amersham



facebook.com/TotallyAmersham

Here For You

We know it's been tough out there lately. That's why we're offering you the chance to **promote your business across the community for FREE!**

Be Part of Something Special

Totally Amersham is an initiative by the Amersham Community Board to bring the community together across Amersham on the Hill, Amersham Old Town and Chesham Bois in support of local businesses like yours.

Our new Facebook page will be up and running very soon, and we're offering promotion of your business to the community for free!

Keep us up to date with your latest news and offers and we'll pass them on to the community too!

An initiative by the Amersham Community Board



Supporting You With Free Promotion of Your Business Across the Community



facebook.com/TotallyAmersham

How to Take Part

All we need from you are a few simple details to promote your business across the community for FREE!

To get your update onto our new Facebook page, contact our partners at Square1 with your business name, address, a simple summary of up to 50 words and details of any promotions you may be running now, or in the run up to the festive period. You can also send us appropriate images and details of your own Facebook page for us to tag you in when we share your update.

Simply email these details over or use the web address below to fill out a straightforward form that will collect everything we need. And should you need any further help, give us a call!

Who to Contact

Email: hello@square1marketing.co.uk
Phone: 01494 733650
Web: square1.co.uk/TotallyAmersham

Don't Miss Out!

Remember, this is 100% free with no obligation to join in, but we're doing this for you, our local businesses. Together, we can show how much our town has to offer. And our Facebook page is just the start!

So get involved, tell your friends and colleagues and be part of something positive in 2020 and beyond.

An initiative by the Amersham Community Board



- A meeting was held with Little Chalfont Parish Council and Little Chalfont Community Association to discuss ways in which the local village could be enhanced. We discussed promoting businesses & local walking/cycling routes, and ways to increase the attractiveness of the towns, such as reducing littering by providing more bins.





Green Issues

- A smaller working group are exploring green initiatives in the local area. Amersham Museum and local group S.A.F.E - Sustainable Amersham For Everyone - are looking at ways to demonstrate how consumption has changed over the years and encourage people to make small changes to help the environment.

Transport



- A new working-group was setup to discuss transport issues for the board area
- The group agreed to draft and agree an approach to parking which will be adopted in order to manage the expectations of residents, members and the transport & highways authority.
- This will be developed in collaboration with the Parking Team and circulated to board members.

Projects in the pipeline

- Restore Hope Christmas Family Food and Activities
- Chiltern Rangers working with local schools such as Stony Dean and St Mary's
- Chiltern Arts March 2021 concert in the local Church
- Amersham Scout Hut development
- The Fitness Garden activities support to older people
- Amersham Oakfield Corner display
- Little Chalfont Nature Park CCTV
- Amersham Museum Shopping Before Plastic Project



Consultations

- yourvoicebucks.citizenspace.com
- Budget Consultation closes on 8th November
- Home to School Transport Consultation closes on 7th December
- Taxi Licensing Policy Consultation opens 10th November
- Climate Change and Air Quality Strategy Consultation opens 16th November